



MOBILE SUITES

ELITE SUITES

2017 LUXURY FIFTH WHEELS

*Begin your journey with the one that started it all... the DRV Mobile Suites.*

The Mobile Suites is the foundation that DRV is built upon. It offers all the comforts of home, all the conveniences of a residential kitchen and the peace of mind that comes from knowing you've chosen the best construction available on the market today.







44 NASHVILLE | Mocha Cherry with Gettysburg Décor and Café Furniture









## 44 NASHVILLE

You expect the ultimate in form, function, and design. By listening to our customers support and feedback we have taken our Mobile Suites to a new level. Our newest floor plan, the Nashville, features the largest front living area, complete with two recliners and two sleeper sofas, 60" HD Smart TV, and a modern landscape fireplace.









## 44 NASHVILLE

The master suite in the Nashville utilizes our tall ceilings to create a luxurious retreat. This height allows us to dramatically increase the storage available, which is perfect for our full-timers as they travel into different seasons. This suite also features a one of a kind private master bath with a residential sized shower to accommodate our tallest DRV family members.









36 RSSB3 | Honey Cherry with Gettysburg Décor and Cane Furniture









36 RSSB3

Engineered for dependability and lasting beauty, your Mobile Suite will be every bit as sophisticated as you are. Each floor plan features a gourmet kitchen that also includes a 20 cubic foot residential refrigerator, stainless steel dishwasher, convection microwave, soft-close drawer guides, and hand laid luxury vinyl plank flooring.









## 36 RSSB3

This attractive bedroom features accommodations for separate washer and dryer hook-up, along with a king sized bed with generous storage underneath. The walk-in closet with aromatic cedar lining is enclosed with custom hardwood cherry sliding doors that push back for full access to the wardrobe. In addition, our exceptional vanity slide significantly widens the walking area in front of the bed while not compromising on storage.





**Silver Sands**  
Full Body Paint (Option)



**Crimson Dusk**  
Partial Body Paint (Standard)



**Copperbay**  
Full Body Paint (Option)



**Shadow Birch**  
Partial Body Paint (Standard)

2017  
MOBILE SUITES







*Stand tall in the Elite Suites – our moving masterpiece.*

Absolutely no detail has been overlooked, from professionally stained hardwood cabinetry with high polished quartz countertops to hand-laid custom flooring. This residential combination separates the Elite Suites to a class by itself.



40 KSSB4 | Mocha Cherry with Symphony Quartz Counters and Cane Furniture





Each Elite Suites Gourmet Kitchen is built around a standard stainless steel residential appliance package like the Mobile Suites, but we have upgraded the package to include a state of the art induction cooktop. Elegant hand-laid porcelain backsplashes, quartz countertops, and a custom over-the-island light feature complete the Elite Suites Gourmet Kitchen package.

We offer our Elite customers the choice between multiple luxury quartz countertops, flooring, and full body paint schemes to allow them the opportunity to build their Elite Suites just the way they want it.





**Westport Harbor**  
Full Body Paint  
w/Window Silks



**Cinder Ridge**  
Full Body Paint w/Window Silks



**Desert Dream**  
Full Body Paint w/Window Silks



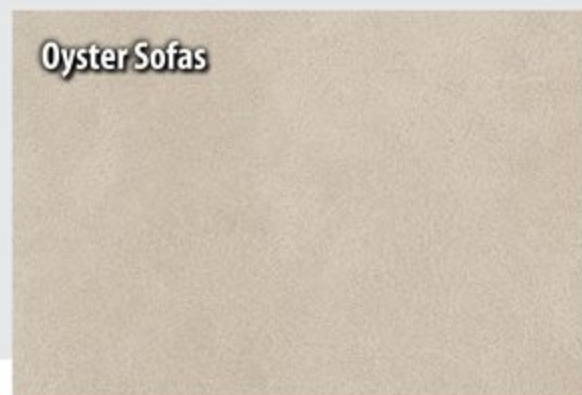
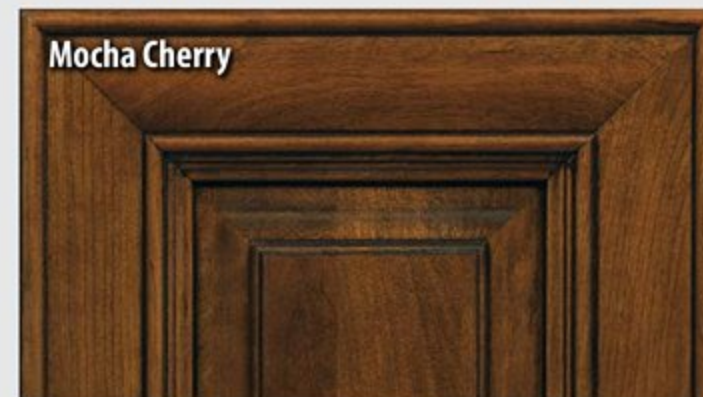
**Superior Sunrise**  
Full Body Paint w/Window Silks



**Western Gem**  
Full Body Paint w/Window Silks

2017  
ELITE SUITES







# FEATURES AND BENEFITS

From the ground up, all units are built with automotive style components. Our innovative designs make it easier to transport, set up and maintain your unit.

## STRUCTURE

**Professionally designed and tested 15" triple steel box tube chassis.** Super strong foundation to build a lasting, high quality fifth wheel.

**All-weather heavy duty aluminum floor system.** The floor is screwed and bolted together and will not rot over time. Also, we do not use staples which eventually work up through the floor covering.

**R-29 insulated frame floor system with three weather barriers.** Warm floors for extended or full time use: and keeps out condensation.

## TECHNOLOGY

**New state of the art Level-Up™ leveling system and industrial hydraulic system.** Level your coach with a push of a button.

**New automotive style Kodiak® disc brakes.** Limited lifetime warranty; smoother stopping; shorter stopping distance; low maintenance cost.

**Heavy duty Goodyear® H-rated 17.5" tires and aluminum eight bolt wheels.** Heavier load capacity. Special tread pattern to dissipate heat. Tires are regroovable for miles and miles of safe use. Wheels are light weight and will not rust.

**Greasable suspension with bronze bushings.** Ease of maintenance and long-wearing.

**SeeLevel tank monitoring system.** Uses sonar to provide instant and accurate readings of all tanks.

## STURDY

**Screwed and glued construction.** Solid; 16" o.c. stud spacing.

**3.25" aluminum framed walls with R-16 insulated rating. Exclusive foam core vapor barrier.** Lightweight; lower heating and cooling cost; noise reduction; eliminates chance of condensation.

**Radiused aluminum roof rafters on 16" centers.** More space; more insulation; improved water run off; maximum load capacity per square foot.

**R-25 insulated roof system with plywood and rubber or fiberglass covering.** Improved weather barrier; sound deadening; low maintenance; lower heating and cooling costs.

**Soft touch interior ceiling.** Sound proofing; easy to clean; extra insulation.

## REFINED

**Conveniently located wall switches control all lighting.** Fingertip control of all task and decorative lighting.

**Overhead LED room lighting on dimmer switches.** Personal light control.

**Designer full face cabinet doors and soft close drawers.** Optimal storage; residential look; residential function.

## RELIABILITY

- High pressure hydraulic lines with metal fittings
- Individual push button slide room controls
- Industrial stabilizer jacks located and wind tested to provide maximum stability
- Heavy gauge UL copper wiring
- Residential copper water manifold
- Convenient lights at all exterior service locations
- Reliable LED lights

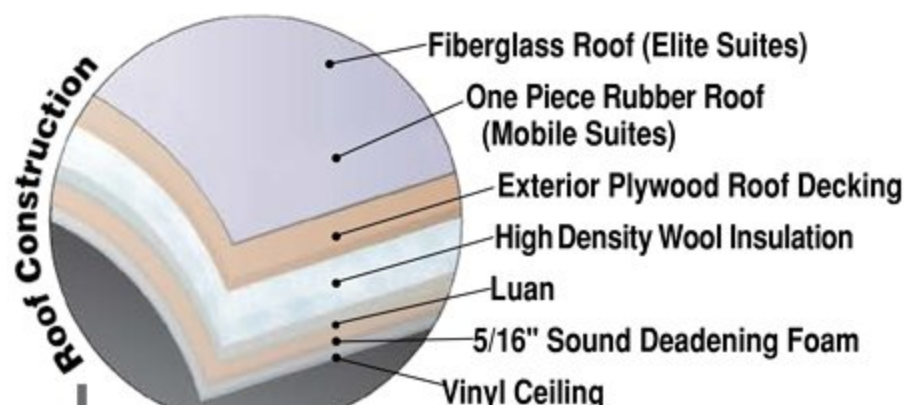
- Gel coat fiberglass walls and exterior doors
- Plywood roof decking
- Extra sound proofing in floor, walls and roof
- Engineered back up lights
- Ultra quiet ducted lo-pro A/Cs
- Automotive disc brakes
- Pull out battery and LPG bottle trays
- Furnace return air replaceable filter

- Over size basement storage doors with gas lift cylinders
- Automotive painted exterior graphics
- Tough skin special coated rock guard.

*NOTE: Some features shown are exclusive to specific makes and models. Please review the complete Standards and Options list for availability.*



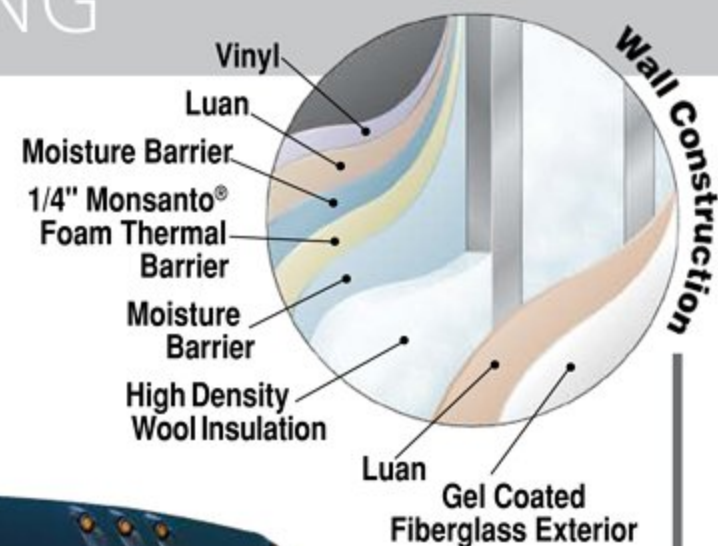
# CONSTRUCTED FOR FULL TIME LIVING



## Residential Roof R25

Scare Light/Back Up

Vinyl  
Luan  
Moisture Barrier  
1/4" Monsanto® Foam Thermal Barrier  
Moisture Barrier  
Aluminum Roof Rafters 16" O.C.  
1" x 2 1/2" Aluminum Studs



## Residential Sidewall R16



Hydraulic Jacks

Hydraulic Stabilizer Jacks

Slideout Hydraulics w/Individual Electronic Control

Wider Tread

High Density Wool Insulation

Luan

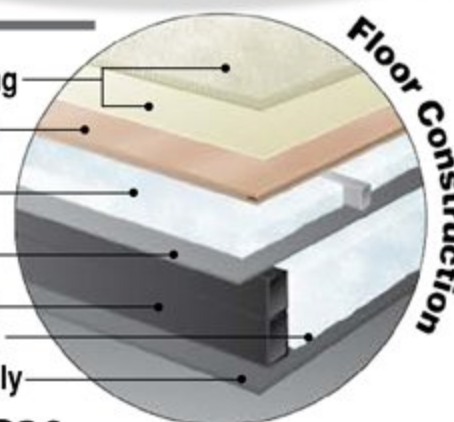
Gel Coated Fiberglass Exterior

EcoBatt High Density Wool Insulation is derived from renewable materials.



Carpet/LVT Vinly Flooring  
5/8" T/G Exterior Grade Plywood  
1" x 2 1/2" Aluminum Floor Joists  
High Density Wool Insulation  
Vapor Barrier Underbelly  
15" Steel Box Tube Chassis w/ High Density Wool Insulation  
Extruded Double-Layer Underbelly

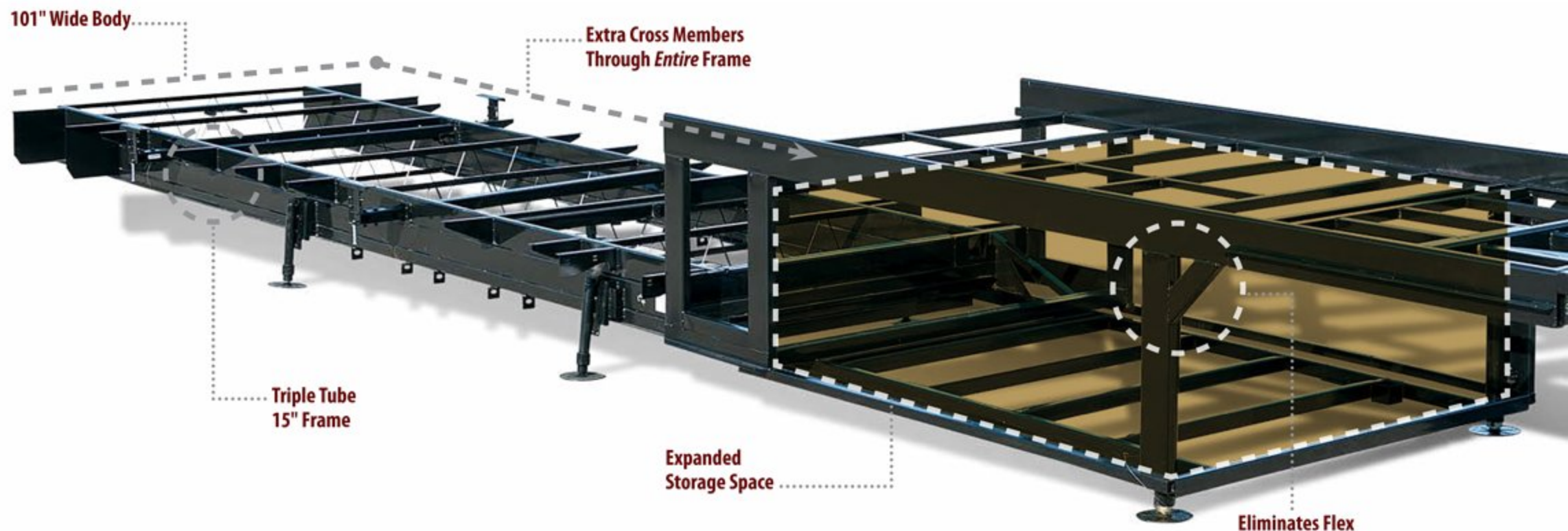
## Residential Floor R29



**All Season Thermal Pack with High Density Wool Insulation – Standard on all Suites**



# DRV ADVANTAGES



Stacked triple-tube steel frame for 15" of maximum strength; the largest foundation on any fifth wheel in the industry.



Industrial, pinless hydraulic jacks are mounted at a 5-degree angle for maximum stability.



Commercial hydraulic rack & pinion slide-outs. All gear boxes are located inside the frame for the ultimate weather protection.



Heavy-duty 17.5" Goodyear® tires provide increased load capacity while staying cool on long hauls. We use truck tires, not RV tires, to ensure better performance and peace of mind.



Commercial E-Z Lube® hubs surrounded by 8 large 5/8" stud bolts and standard automotive disc brakes round out the safety features of every DRV unit.





## Box Steel Solid

The foundation is the most important part of your home. It needs to be strong, reliable, and able to last the tests of time.

DRV's custom-engineered 15" triple box tube frame measures 101" wide — the largest, most rigid fifth wheel frame in the industry. This design eliminates flex around the pin box, and allows us to frame even the upper deck with steel to open up the storage compartment, providing you with space to fit all your personal belongings.

## The DRV 6-Jack Level-Up System

Designed by DRV, our 6-jack level-up system provides quick and easy leveling and the strength to stabilize the coach when set up.



Residentially-hung sidewalls are carriage-bolted into the floor for solid construction and superior strength.

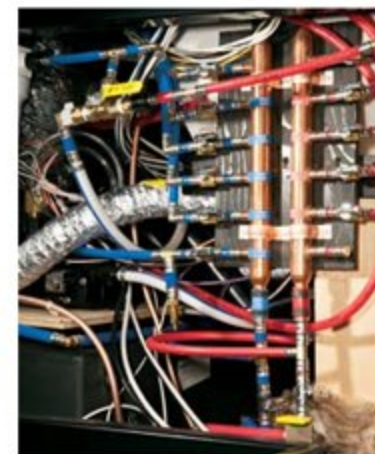


Our 3 1/4" walls are the thickest in the industry, giving you maximum insulation from noise and weather. The exclusive foam core vapor barrier eliminates condensation.



### Formaldehyde Free!

High-density wool **R-16** residential insulation completely surrounds all of our walls and slides. Best insulation in the industry *and eco-friendly!*



A copper water manifold comes standard, ensuring equal water pressure throughout your home. And each water line is clearly labeled and has its own shut-off valve, allowing you to isolate a single line without shutting off water to the rest of your home.



MOR/ryde® I.S. Suspension eliminates the axle and leaf springs, allowing each tire to work independently. With 5 1/2" of travel per assembly, MOR/ryde® I.S. will absorb road shock and protect your home for its lifetime.



# FLOOR PLANS



**36 RSSB3** - Mobile & Elite Suites  
Length 37' 2" | Est. Dry 15,800 (MS) 16,200 (ES)



**38 RSSB3** - Mobile & Elite Suites  
Length 38' 4" | Est. Dry 16,300 (MS) 17,100 (ES)



**38 KSSB** - Mobile & Elite Suites  
Length TBD | Est. Dry TBD



**39 DBRS3** - Mobile & Elite Suites  
Length 40' 10" | Est. Dry 16,800 (MS) 17,800 (ES)



**38 RSB3** - Mobile & Elite Suites  
Length 39' | Est. Dry 16,600 (MS) 17,200 (ES)



**39 RESB3** - Mobile & Elite Suites  
Length 38' 10" | Est. Dry 17,300 (MS) 17,800 (ES)



**38 RSSA** - Mobile & Elite Suites  
Length 39' 1" | Est. Dry 16,300 (MS) 17,100 (ES)



**40 KSSB4** - Mobile & Elite Suites  
Length 40' 10" | Est. Dry 17,100 (MS) 18,300 (ES)





**All Models Feature:**

- Fresh Tank - 100 gal.
- Gray Tank - 75 gal.
- Black Tank - 50 gal.
- SeeLevel Tank Monitor
- Hot Water Heater - 12 gal.
- Goodyear 17 1/2" H-Rated Tires
- Automotive Disc Brakes

MS = Mobile Suites | ES = Elite Suites

**Note:** All lengths are measured from the pin box to the rear cap.  
All dry weights are estimates depending on options. For GVWR please visit our website.



# STANDARDS

## Frame/Running Gear:

- Goodyear® 17 1/2" H-Rated Re-Groovable Tires
- Heavy Duty Grease Bolt Shackles with Bronze Bushing (MS)
- **Kodiak® Automotive Disc Brakes**
- MORryde® I.S. Suspension and Heavy Duty Pin Box (ES)
- Heavy Duty Axles
- Commercial Grade E-Z Lube® Hubs
- **15" Triple Stacked Box Tube Frame**
- 101" Wide Body
- Industrial Hydraulic System for Jacks and Lower Level Slides
- Electric Bedroom Slide
- **Slide Outs with Select Push Button Controls**
- Pinless Hydraulic Front Landing Jacks at 5 Degree Outboard Angle

## Construction: Floor

- 3" Thick Floor
- **14" O.C. Floor Aluminum Floor Joists**
- Screwed and Glued Joist Construction
- 5/8" Tongue and Groove Plywood Flooring
- **Four Season Perimeter Heat Ducting in Floor**
- Residential Rated **R29** Formaldehyde Free Wool Insulation

## Construction: Walls/Slides

- **3 1/4" Thick Walls/Slides**
- 16" O.C. Stud Spacing
- Screwed and Glued Aluminum Stud Construction
- **1/4" Monsanto® Fome-Cor Vapor Barrier (Eliminates Condensation)**
- 1/4" Thick Gelcoat Fiberglass with Wood Backer
- Residential Rated **R16** Formaldehyde Free Wool Insulation

## Construction: Roof

- 16" O.C. Rafter Spacing
- Residential Rated **R25** Formaldehyde Free Wool Insulation
- **Plywood Roof Overlayment**
- Seamless, 1-Piece Rubber Roof (MS)
- Fully Molded 1-Piece Fiberglass Roof (ES)
- **Soft-Touch Vinyl Ceiling, Including Interior Slide-Out Ceilings**

## Exterior:

- **Straight Roof Line with 8' Tall Interior Slide Out Height**
- High Density Wool Insulation
- Custom Painted Exterior with Clear Coat (MS)
- Gelcoat Fiberglass Molded Caps
- Gelcoat Fiberglass Molded Fender Skirts (ES)
- Full Body Painted Exterior with Custom Window Silks (ES)
- Frameless Tinted Safety Glass Windows
- Four Exterior Security Lights
- **Back-Up Lights with 50 Watt Halogen Lights**
- Commercial LED Exterior Clearance Lights
- Red LED Turn Signal
- LED Docking Lights
- 78" Entry Door
- **Removable Storm Door Panels**
- Keyless Entry Door (ES)
- **Metal Slam Door Compartment Latches**
- Extra Thick Compartment Doors with Gas Struts
- Easy Access Light Switches for Basement
- Washable Storage Compartment Liner
- Custom Enlarged Control Center with LED Lighting
- Lend-a-Hand Exterior Grab Handle
- Power Awning with LED Lights and Aluminum Weather Shield
- Water Pump Switch at Outside Hookup Center

## Systems/Tanks:

- 50 Amp Service with Detachable Cord
- 80 Amp 12 VDC Converter
- 100 Gal. Fresh Water Tank
- 75 Gal. Grey Water Tank with Power Flush
- 50 Gal. Black Water Tank with Power Flush
- **SeeLevel Tank Monitoring System on All Tanks**
- Residential Type 1/2" Water Lines
- **Exclusive Copper Water Manifold with Individual Shut-Off Valves**
- Whole House Water Filtration System
- Anderson Multi-Switch Water Bypass System
- Slide Out Propane Tray with Dual 40 Lb. Tanks
- 12 VDC Battery on Pull Out Tray

- 12 Gal. Gas/Electric DSI Water Heater
- 40,000 BTU Furnace with Custom Plenum
- **Residential 5 Duct Heating System with 6" Ducting**
- **Forced Heat Ducting to Tanks/Water System**
- **Fully Ducted A/C System with Cold Air Return**
- 15,000 BTU Low-Profile Main A/C
- Wired and Ducted Bedroom A/C with Cold Air Return
- Triple 15,000 BTU Low-Profile A/Cs (All 43/44' Models)
- **Solar Prep**
- HD Roof Satellite Prep for Dual DVR Receivers
- HD Ground Satellite and Cable Prep
- Power HD TV Antenna

## Interior: Luxury Living Room/Dinette

- Hand Laid Vinyl Plank Tile (MS)
- Hand Laid 12 x 24 Vinyl Floor Tile (ES)
- Hand Laid Vinyl Wood Plank Flooring (ES)
- Residential Rebond Carpet Pad
- Plush Residential High Durability Carpet
- Honey Cherry/Mocha Cherry Hardwood Solid Cherry Cabinetry
- Hardwood Solid Cherry Fascia Trim Around Slide Outs (MS)
- Hardwood Solid Cherry Fascia Trim Around Slide Outs with LED Lights (ES)
- Hardwood Solid Cherry Cabinet Stiles (Pocket Drilled/Screwed)
- Concealed Cabinet Door Hinges
- Raised Panel Cabinetry (MS)
- Full Face Raised Panel Cabinetry (ES)
- **Soft-Close Full Extension Metal Drawer Guides**
- **LED Interior Ceiling Lighting on Dimmer Switches**
- Decorative Wall Clock (MS)
- Personalized Hardwood Wall Clock (ES)
- Utility Closet with Coat Storage and Centralized Control Station
- Interior Ceiling Fan
- Decorative 110V Light Sconces
- Custom Hardwood Dinette Buffet with Solid Surface Top (MS)
- Custom Hardwood Dinette Buffet with Quartz Top (ES)
- **Dinette Table with Hidden Leaf Extension**
- (2) Hardwood Dinette Chairs with Fabric Accent

- Custom Hardwood Pull Out Desk (Most Models)
- Crown Molding Throughout
- HD Wiring Throughout
- **MCD Power Night Shades with Master Switch (ES)**
- Dyson® Hand Held Vacuum (ES)
- Franklin Full Width Sofa with Hide-a-Bed
- Franklin Theatre Seating with Center Console (Side Entertainment Models)
- Franklin Recliners (Rear Entertainment Models)

## Interior: Gourmet Kitchen

- **20 Cu. Ft. Residential Stainless Steel French Door Refrigerator**
- **Stainless Steel Convection/Microwave**
- **Stainless Steel Residential Dishwasher**
- **Pull-Out 13 Gal. Garbage Can**
- Double Deep Bowl Stainless Steel Sink with Sink Covers
- Residential Kitchen Faucet with Separate Sprayer
- **Custom Hand Laid Limestone and Glass Backsplash (MS)**
- **Custom Hand Laid Tile and Porcelain Backsplash (ES)**
- High Polished Solid Surface Countertops (MS)
- Residential Quartz Countertops (ES)
- LED Lighted Avonite® Edging Around Island (MS)
- Sealed 3 Burner Cooktop with Hinged Countertop Lift (MS)
- Electric 2 Burner Induction Cooktop (ES)
- Custom Appliance Garage with Pull-Out Tray (Most Models)
- Custom Over the Island Wood/Glass Accent Light
- Lighted Pantries and Kitchen/Bathroom Toe Kicks
- **Lighted Ceiling Soffit with Crown Molding and LED Accent Lighting**

## Interior: Master Bath/Hallway

- Hardwood Steps
- Hand Laid Vinyl Plank in Hallway/Bathroom (MS)
- No Carpet in Hallway
- Washer/Dryer Prep
- Heat and A/C Ducting in Bathroom
- Maxxair® Fan in Bathroom (Exhaust Only)
- 1-Piece Fiberglass Shower with Molded Seat
- 48" 1-Piece Fiberglass Shower with Molded Seat (Some Models)



# OPTIONS

- Granite Colored Fiberglass Shower (ES)
- Sky-Light Over Shower with LED Pot Light
- Porcelain Toilet with Water Saver Spray (MS)
- Macerator Toilet (Some Models) (MS)
- Macerator Toilet (ES)

## Interior: Master Bedroom

- **Custom Walk-in Front Closet with Built in Dresser (Most Models)**
- **Real Cedar Lined Front Closet**
- **Custom Hardwood Wardrobe Doors**
- King Bed Suite 72" x 80" with Innerspring Mattress (MS)
- Sleep Number® Bed by Select Comfort (ES)
- Queen Bed Suite (Standard on 32' Models)
- Full Storage Under Bed Base
- Separate Bedroom Ceiling Speakers
- Over the Bed Reading Lights on Separate Switches
- Solid Surface Tops on Nightstand (MS)
- **MCD Power Night Shades with Master Switch (ES)**

## Full Timer's Package (Forced Option):

- 55" LED Smart HDTV and Home Theatre Package
- 32" LED Bedroom TV Package
- 15 BTU Ducted Lo/Pro Bedroom A/C
- Whole House Central Vacuum (MS)
- Goodyear® 17 1/2" H-Rated Spare Tire and Carrier
- 2" Receiver Boat Hitch with 7-Way Plug
- Manual 4-Step Entry
- Detachable Ladder Only
- Frameless Thermopane Windows

## Traveler's Package (Forced Option):

- MCD Day/Night Roller Shades (MS)
- Built-In Fireplace
- 1000W Inverter with Dual 6V Batteries
- Maxxair® Fan with Rain Sensor - Bathroom
- Maxxair® Fan with Rain Sensor - Kitchen
- Power Management System
- Six Point Hydraulic Leveling System
- One Touch Auto Leveling
- MORryde® I.S. Suspension with MORryde® Pin Box (MS)
- Keyless Entry Door (MS)

## Cabinetry (Standards):

- Honey Cherry
- Mocha Cherry

## Décor (Standards):

- Gettysburg
- Kashmir
- Milan

## Flooring (Standards):

- Hand Laid Vinyl Wood Plank Flooring (ES)
- High Ounce Carpet
- Hand Laid Vinyl 6" x 36" Floor Tiles (MS)
- Hand Laid Vinyl 12" x 24" Floor Tiles (ES)

## Countertops (Standards):

- High Polished Vernazza (MS)
- Intermezzo Quartz (ES)
- Kindred Quartz (ES)
- Symphony Quartz (ES)

## Interior:

- Power Recliner Theatre Seating/Recliners

## Entertainment:

- 60" LED Smart HDTV (Rear Entertainment Models Only)
- 32" LED HDTV Outdoor Entertainment
- Winegard® Trav'ler HD Auto Satellite
- WiFi Ranger Wireless Router

## Kitchen:

- 3 Burner Range/Oven IPO 3 Burner Cooktop (MS)

## Bedroom:

- Built in Front Wardrobe Safe with Keyless Entry (MS)
- Queen Bed Suite (Standard on 32' Models)
- Honey Cherry Folding Chair
- Mocha Cherry Folding Chair
- Sleep Number® Bed by Select Comfort (Standard ES)
- Vanity Slide in Front Bedroom (Standard on Some Models) (N/A on 32' MS)

## Systems/Vents/Fans:

- 15 BTU Ducted Lo/Pro AC – Bedroom
- Heat Pump
- Maxxair® with Switch Control – Bedroom
- Splendide® Front Load 2 piece
- Splendide® XC 2,100 Combo
- Generator Prep
- Onan® 5,500 Marquis Gold Generator with Prep
- 2,800 Watt Inverter with Four 6V Batteries
- Surge Protector with Voltage Protection and Remote Display
- Heat Pads on All Tanks with Elbow Heater on Drain Pipe
- Truma Continuous Hot Water Heater (ES)

## Construction/Running Gear:

- **Power 4-Step Entry (Exclusive)**
- Power Cord Reel
- **HBA Brake Cam (To be Ordered Special for Customers with GM Trucks)**

## Exterior/Awnings:

- Slide Toppers
- Power Dinette Patio Awning with Weathershield
- Slide Out Storage Tray (36" x 90")
- Audible Wireless Backup Camera System
- RVIA
- CSA

## Partial & Full Body Paint (Standards/Options):

- Crimson Dusk (Standard MS)
- Shadow Birch (Standard MS)
- Copperbay (Option MS)
- Silver Sands (Option MS)
- Cinder Ridge (Standard ES)
- Desert Dream (Standard ES)
- Superior Sunrise (Standard ES)
- Western Gem (Standard ES)
- Westport Harbor (Standard ES)







*Your suite awaits you...*

**DRV**

0160 W 750 N • PO Box 235 • Howe, IN 46746

Factory tours by appointment, please call for specifics 260-562-1075

[www.drvsuites.com](http://www.drvsuites.com)

facebook

twitter

This brochure is based upon the latest product information available at the time of printing. DRV reserves the right to make changes at any time to prices, colors, materials, equipment, specifications and models, and to discontinue models without notice or obligation. Color representations are as close as photographic/print reproduction will allow. All specifications are approximate and dimensions nominal. Text and/or photos may represent equipment or décor items which may not be included as a standard item in your model of choice.